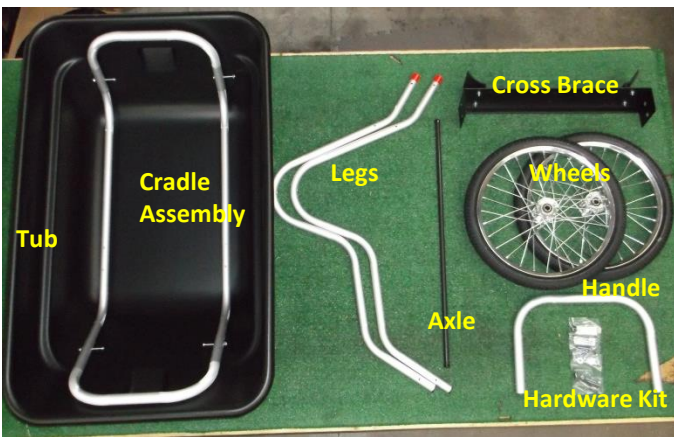
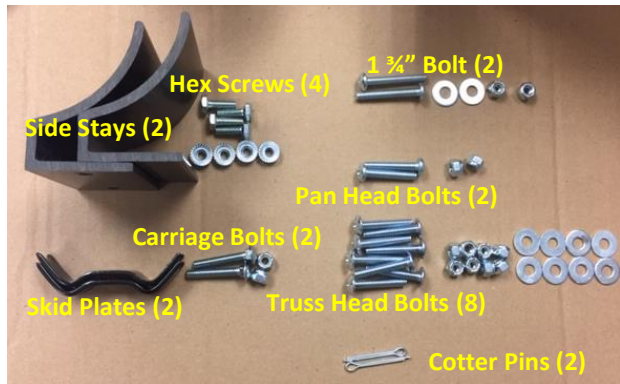


SMART CART INSTRUCTIONS

Step 1: Open the boxes and locate the different components. Get the right tools.

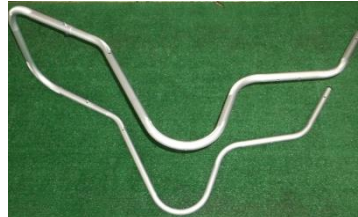


Hardware Kit



Tools: Phillips head screw driver. Socket or wrench set (7/16).

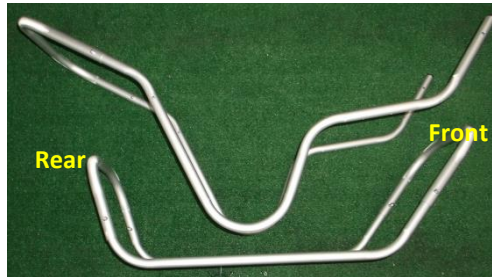
Step 2: Create the Leg Assembly by attaching the Handle to the Legs using the Pan Head bolts.



-Remove and dispose of the red caps. The handle slides on the legs where the red caps were.

Do not fully tighten the hardware.

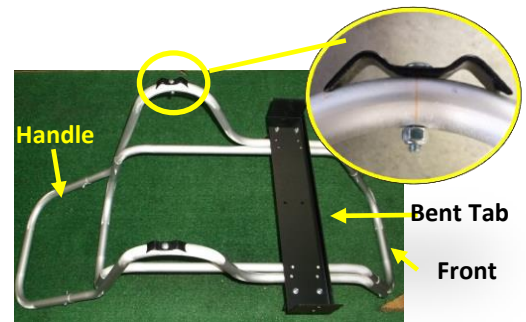
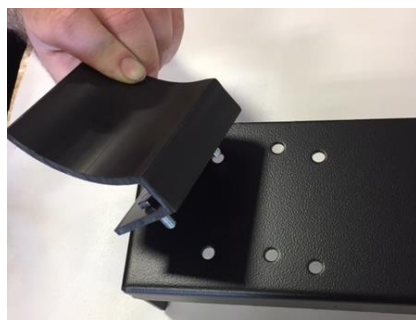
Step 3: Connect the Leg Assembly to the Cradle Assembly using the 2.5" Bolts already attached to the Cradle Assembly.



Connect the front section of the cradle first and then the rear section.

Do not fully tighten the hardware.

Step 4: Install the plastic side stays to the cross brace using the hex screws. Turn the frame upside down and connect the Cross Brace to the Frame using the truss head bolts, nuts and washers. Attach the skid plates to the legs using the carriage bolts.

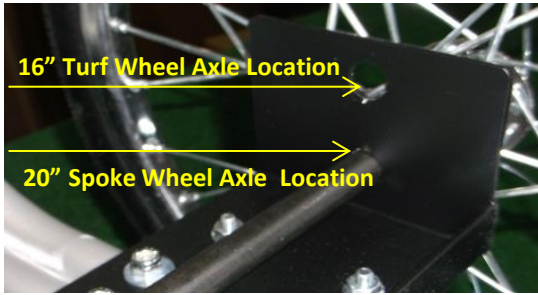


The holes will not align properly if the cross brace faces backward. The cross brace bent tab has to be installed to be close to the front of the frame and the farthest away from the Handle.

TIGHTEN ALL THE HARDWARE. Be careful not to overtighten and do not flatten the tube structure as this might create failure at a later date.

SMART CART INSTRUCTIONS

Step 6: Mount the Wheels to the Axle



Install the axle through the cross brace by first removing one of the vinyl caps, then sliding it through a wheel and then the appropriate hole for your wheel size (see picture above). The cotter pins needs to be opened and bent in order to stay secured.

Step 7: Install the Tub to the Frame



When everything is tight and the wheels are secured, insert the tub starting from the handle end and slide it forward along the frame, be sure it is centered. When the front end reaches its stop point, push the back end under the rear frame piece to secure the tub. You may need to apply very firm pressure and you might hear a loud "snap". This is fine. **To remove the tub**, place your knee on the kickout while holding the handle with both hands and give a 'yank'.

Optional: Secure the tub to the frame If having the possibility of removing the tub without using tools is not important to you and you want to make sure that the tub will never disengage from the frame follow the instructions below. Please note that in most applications the cart will work perfectly without having to secure the tub to the frame using bolts. **The cart is designed in a way that you do not have to secure the tub using bolts. In some very specific applications it may be required and this is why we provided the instructions below. We recommend that you start using your cart without performing this step and decide if you really need it.**



8.1: Make sure that your tub is centered within your frame and drill a hole above the two tub kick-outs (back and front of the cart) going through the pre-drilled holes in the aluminum frame. You would need a $\frac{1}{4}$ " size drill bit and a powered drill.

8.2: Secure the tub to the aluminum frame using the $1\frac{3}{4}$ " bolts, nuts and washers. Make that the washers are installed inside the tub in direct contact with the plastic as pictured.

[If you have difficulty putting together your new cart, please call 207.591.4250 for assistance before disassembling the cradle \(as shipped\).](tel:207.591.4250)

NOTE: The Smart Cart is not made for human transport.