

I-MAT INTERLOCK EQUESTRIAN FLOORING

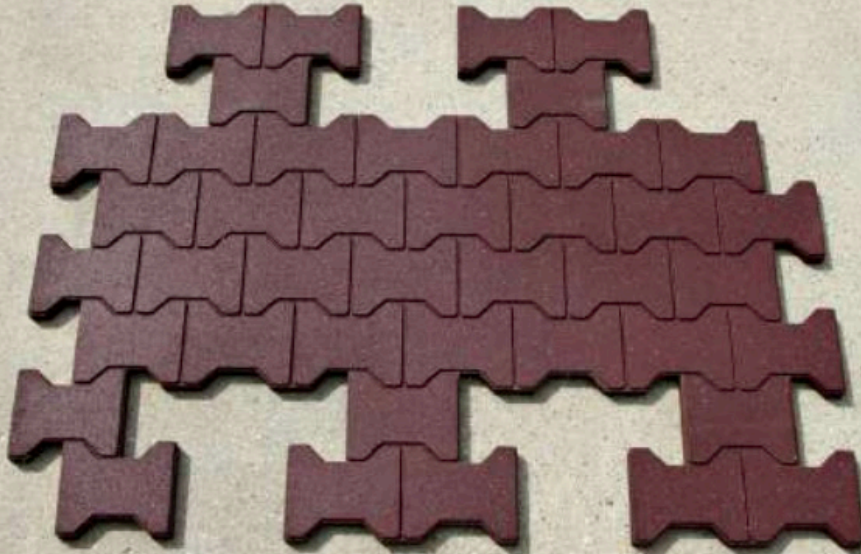
📍 14321 Fifth Line Nassagaweya • Rockwood, ON • N0B 2K0

☎ (519) 856-9959 • 1 (800) 461-3362 ✉ sales@systemequine.com

🌐 www.systemequine.com



Fencing • Stalls • Doors • Windows • Equipment • Exercisers • Tack Store • Farrier Supply • Installations



I-mat Details

Size:

54" W x 32" L x 1" H (12 sq. ft.)

Weight:

90 lbs

Colours:

Black, Grey, Brown, Redwood

Applications:

Aisleways, wash stalls, grooming stalls, outdoor paths



25 tires are recycled to make 1 mat!

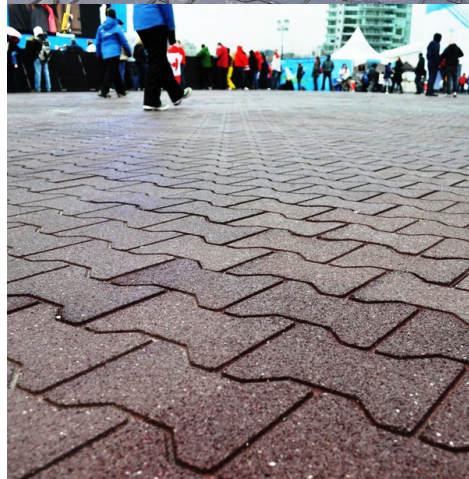
Advantages

- Characterized by a **"dog-bone"** pattern, offers a patented full 4-way **interlock design** capability in a large 12 sq. ft. tile
- Recommended for all outdoor applications and is ideal for installations on a compacted gravel base
- An ideal **alternative** to brick pavers
- Extremely **fast & easy to install**
- Safe, **anti-slip** surface
- All-season, all-weather **durability**
- Patented fully **interlocking** design
- Made from **100% recycled tires**
- In areas where there are no edge or wall restraints, snap-edge or restraint bordering of some type may be recommended (not necessarily required in all situations)

Colours



Actual colours may vary.



Your complete equine solutions partner

