



# Designer Swing Collection

## Installation Instructions



**System Equine**

14321 Fifth Line Nassagaweya • Rockwood, ON • N0B 2K0

1 (800) 461-3362 • [Sales@SystemEquine.com](mailto:Sales@SystemEquine.com)

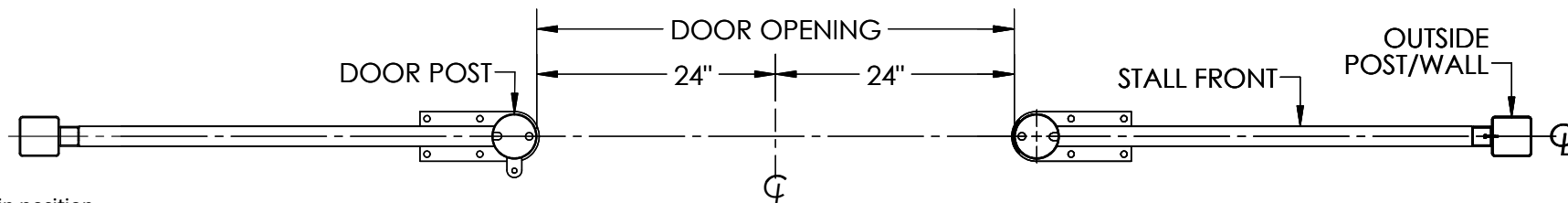
[SystemEquine.com](http://SystemEquine.com)

# DESIGNER SWING COLLECTION INSTALLATION INSTRUCTIONS

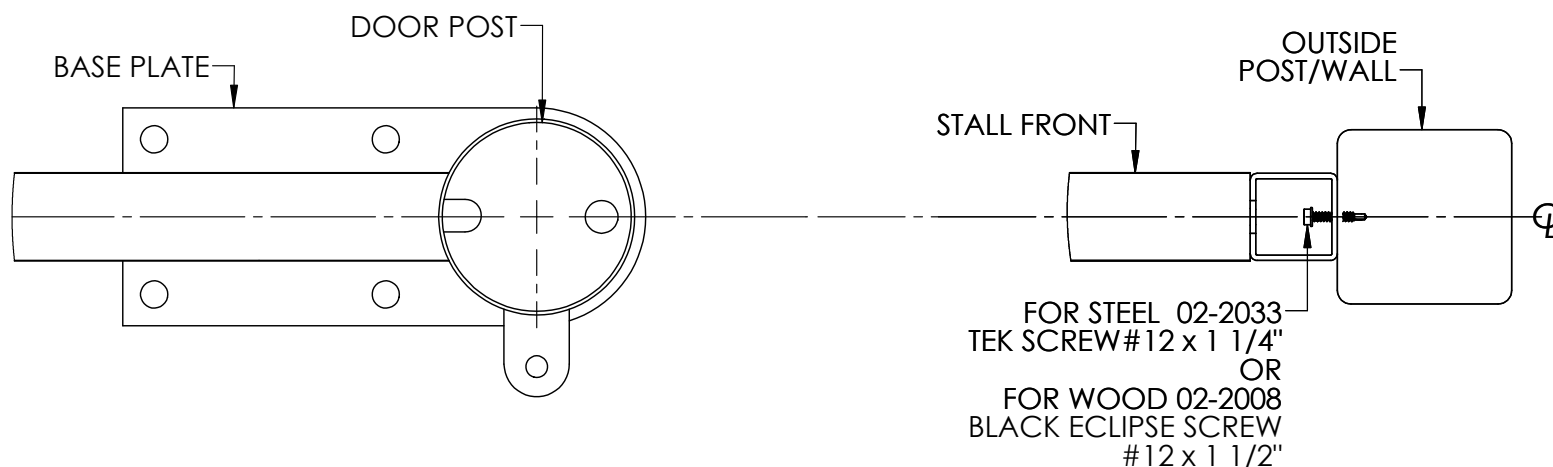
## Installing Stall Front Using NO Side Channels

1. Find the center of the opening you wish to work on and match the wings of the stalls with the appropriate opening. Locate the center of the opening between the outside post/wall. This is the center of the door. The door opening is designed for 48" inside of the two posts. Mark 24" from the center line each way and place the wing against the outside post/wall. Line up the edge of the inside of the door post of the wing with the 24" mark on the floor.

2. Stand one wing in the appropriate place and drill holes through the base plate into the concrete. Repeat with the other wing.



3. Slide the wings back in position and secure the base plate first then secure the wing to the outside post/wall with the self-drilling metal tek or wood screws provided (see connector page if you are using connectors for outside tubes).

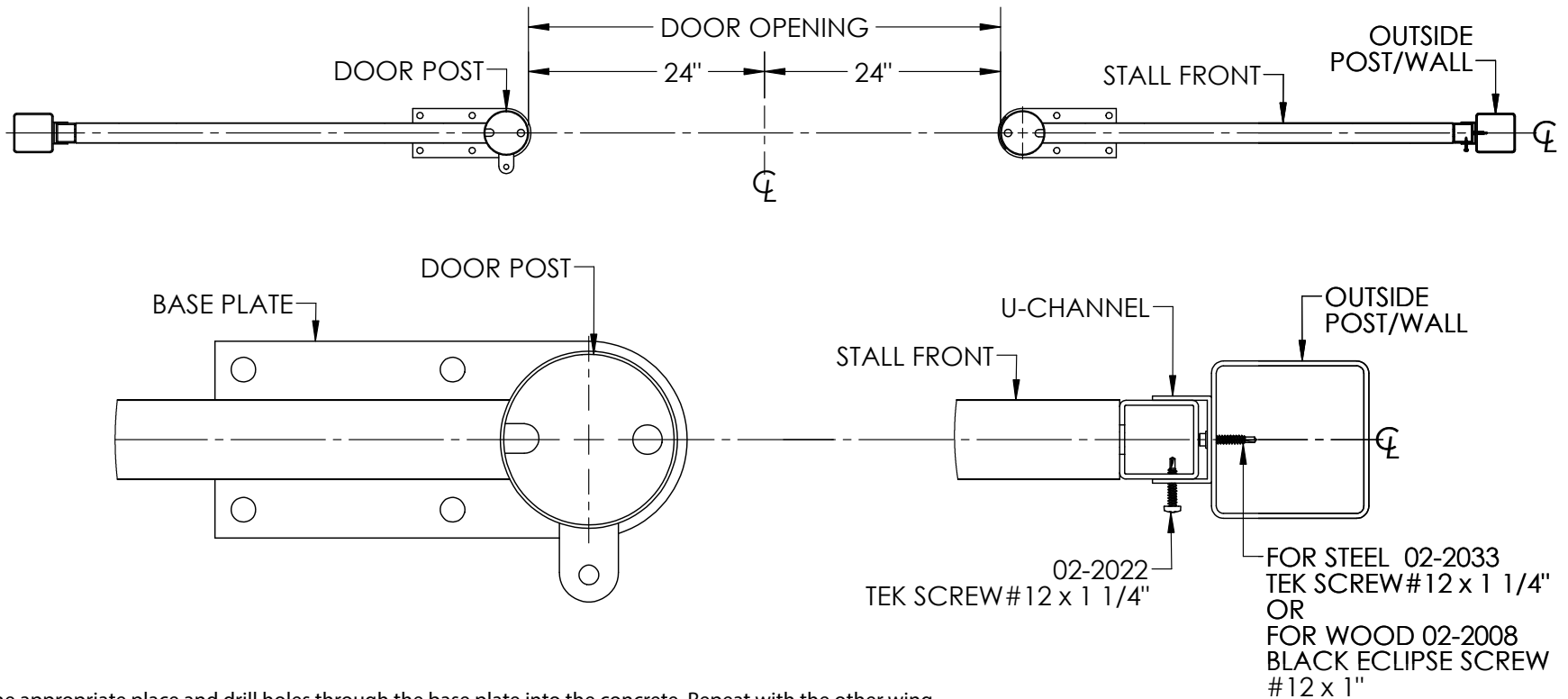


4. Hang the door with the hinge bolts, make sure you have the black bushing facing down.
5. See instructions for appropriate nut placement. You want the thicker nut on the inside and the thinner nut on the outside to ensure maximum adjustment.
6. Once the door is hung and adjusted so it is straight and level, assemble the plunger latch (see instructions page).
7. Install the cover plate on the post for the plunger latch.
8. Manually hold the cover plate over the hole on the door post. Allow the door to close and the plunger latch to latch into the hole. Adjust the cover plate so it is centered and even around the hole. Secure with the tek screws provided.
9. Do the same for the night lock at the bottom.

# DESIGNER SWING COLLECTION INSTALLATION INSTRUCTIONS

## Installing Stall Front Using Side Channels

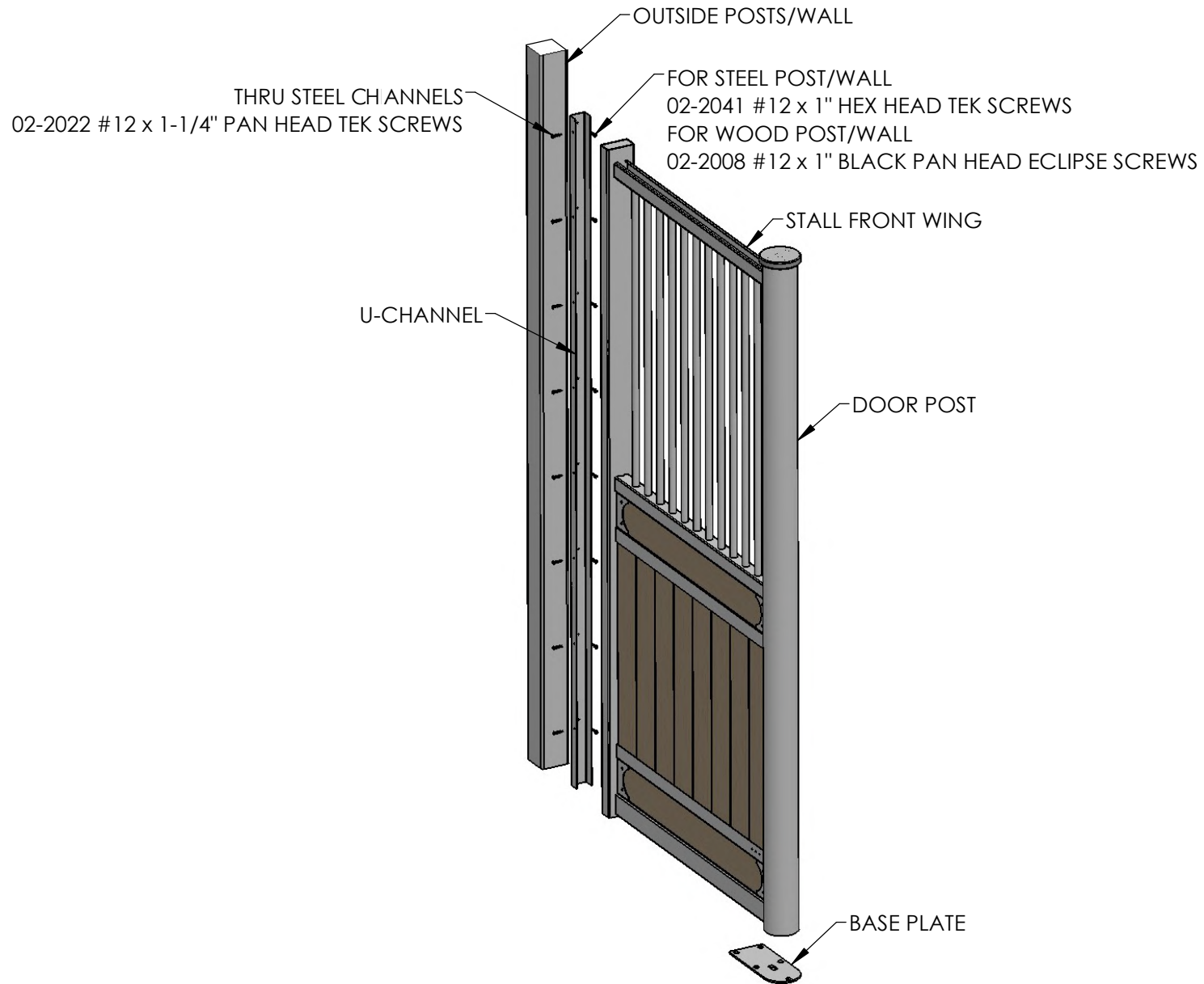
1. Find the center of the opening you wish to work on and match the wings of the stalls with the appropriate opening. Locate the center of the opening between the outside post/wall. This is the center of the door. The door opening is designed for 48" inside of the two posts. Mark 24" from the center line each way and place the wing against the outside post/wall. Line up the edge of the inside of the door post of the wing with the 24" mark on the floor.



2. Stand one wing in the appropriate place and drill holes through the base plate into the concrete. Repeat with the other wing.
3. Slide the wings back in position and secure the base plate first then secure the wing to the outside post/wall with the self-drilling metal tek or wood screws provided (see connector page if you are using connectors for outside tubes).
4. Hang the door with the hinge bolts, make sure you have the black bushing facing down.
5. See instructions for appropriate nut placement. You want the thicker nut on the inside and the thinner nut on the outside to ensure maximum adjustment.
6. Once the door is hung and adjusted so it is straight and level, assemble the plunger latch (see instructions page).
7. Install the cover plate on the post for the plunger latch.
8. Manually hold the cover plate over the hole on the door post. Allow the door to close and the plunger latch to latch into the hole. Adjust the cover plate so it is centered and even around the hole. Secure with the tek screws provided.
9. Do the same for the night lock at the bottom.

# DESIGNER SWING COLLECTION INSTALLATION INSTRUCTIONS

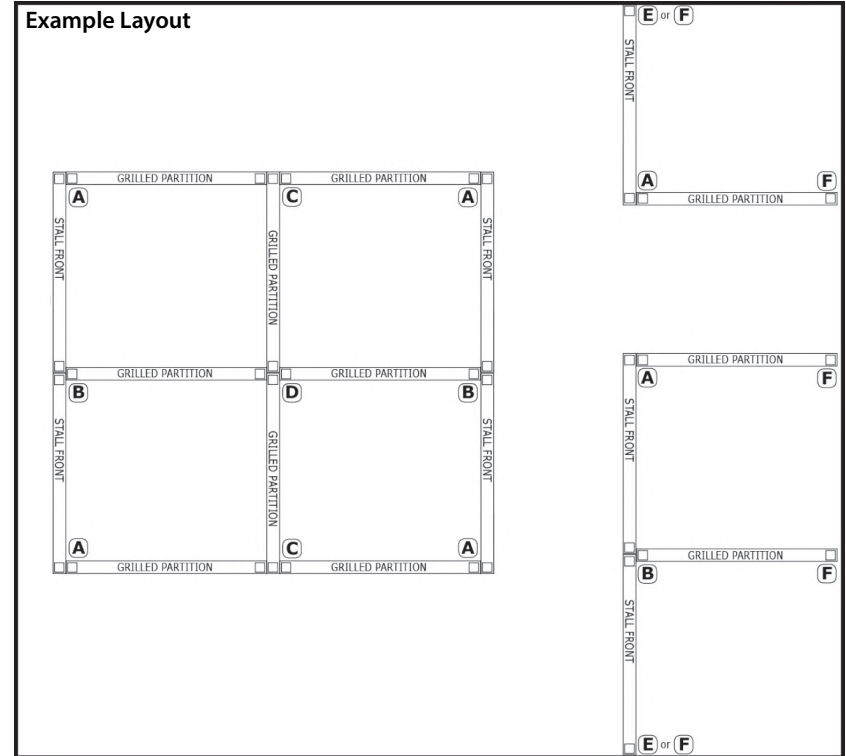
## Installing Stall Front Using Side Channels



# DESIGNER SWING COLLECTION INSTALLATION INSTRUCTIONS

## Installing a Designer Swing Collection Stall Front Using Connectors

1. Make sure you know the configuration of the layout, what the connectors look like, and where they need to go. Place the bottom connectors—either Wall Mount (F), 2-Way Connector (A), or 3-Way Connector (B)—on the ground where the stalls will eventually go.
2. Find the center of the opening you wish to work on and match the wings of the stalls with the appropriate opening/ Locate the center of the opening between the outside post/wall. This is the center of the door. The door opening is designed for 48" inside of the two posts. Mark 24" from the center line each way and place the wing against the outside post/wall. Line up the edge of the inside of the door post of the wing with the 24" mark on the floor.
3. Stand one wing in the appropriate place and drill holes through the base plate into the concrete. Repeat with the other wing.
4. Slide the connectors into the bottom of the two-inch post. While one person holds the wing, take the next panel and lift it over the connector. Take the top connector and slide it into the top of the two panels.
5. From here you will slide the two panels into position; they will now stand by themselves. You can now either screw it into the walls of the barn or start building the rest of the system in the same order.



Description	Finish	Part #
A 2-Way Stall Connector	Galvanized	304-C2W
B 3-Way Stall Connector	Galvanized	304-C3W
C 3-Way In-Line Stall Connector	Galvanized	304-PC3WI
D 4-Way Stall Connector	Galvanized	304-C4W



**Do not install wood into your panels until all panels are assembled**

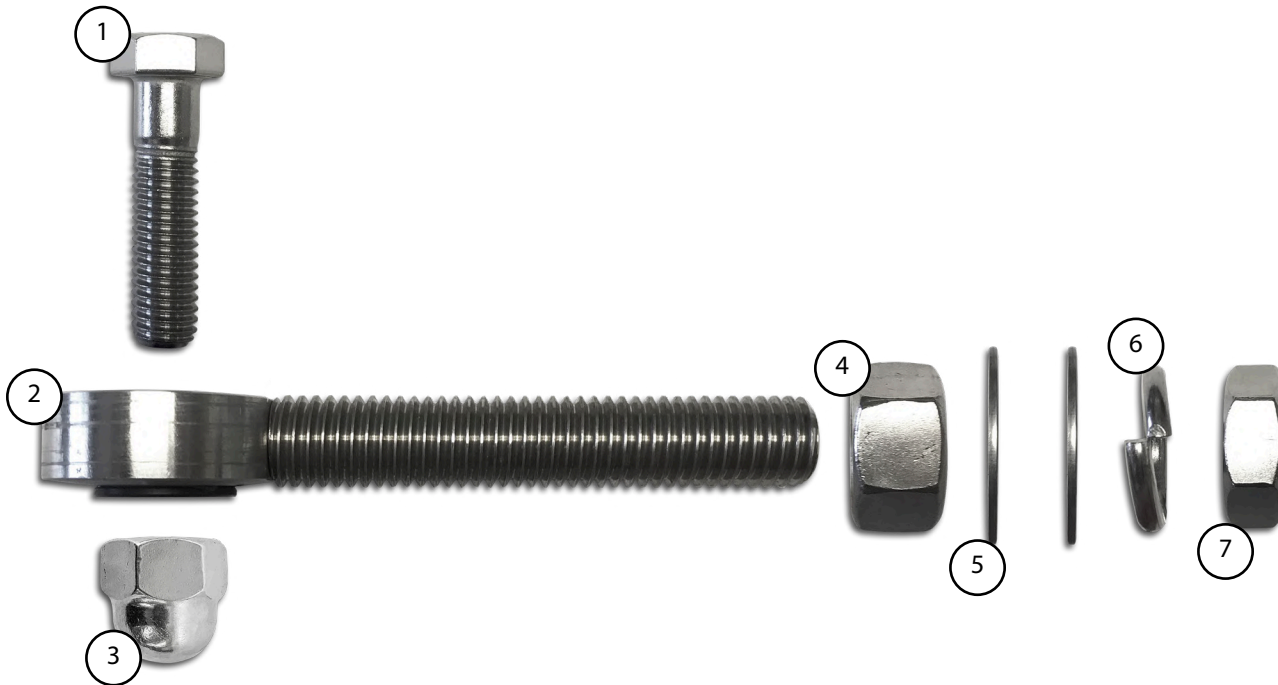
# DESIGNER SWING COLLECTION INSTALLATION INSTRUCTIONS

## Adjustable Hinge Instructions

Part # 357-604



Delrin bushing (black plastic) on Part #2 must be facing ↓



1 **Part # 02-2128 (x2)**  
*Hex Bolt 1/2" x 2" Stainless Steel*

2 **Part # 02-HA-020-W-AB3 (x2)**  
*Eyebolt Loop Weldment for Adjustable Hinge w/Bushing  
3 1/2" Thread*

3 **Part # 02-2242 (x2)**  
*Nut 1/2" Nylock Stainless Steel*

4 **Part # 02-2254 (x2)**  
*Nut 5/8" Jam Stainless Steel*

5 **Part # 02-2229 (x4)**  
*Washer 5/8" Stainless 1 1/2" OD*

6 **Part # 02-2332 (x2)**  
*Washer 5/8" Lock Stainless Steel*

7 **Part # 02-2252 (x2)**  
*Nut 5/8" Stainless Steel*

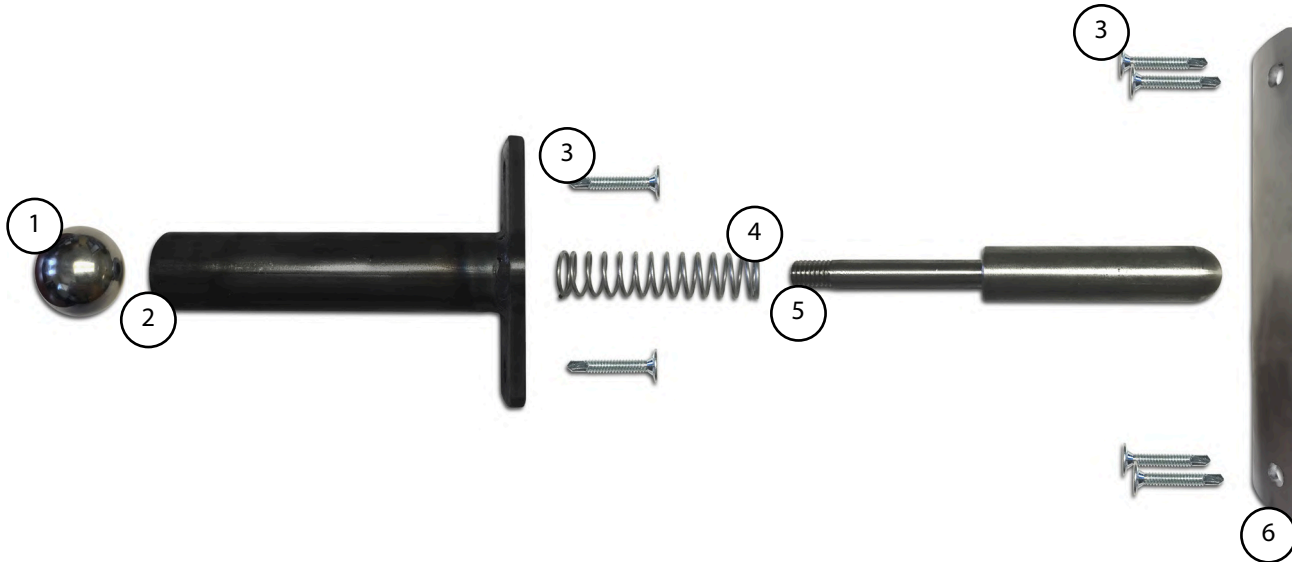
# DESIGNER SWING COLLECTION INSTALLATION INSTRUCTIONS

## Plunger Latch Instructions

Part # 357-600



Add a small amount of loctite to the stainless ball prior to threading on



- 1 **Part # 03-20641**  
*Plunger Latch Ball - Stainless Steel 3/8" - 16 Threaded Hole 1 3/8"*
- 2 **Part # 03-20642**  
*Plunger Latch Sleeve*
- 3 **Part # 02-2022**  
*Screw Tek # 12 x 1 1/4" PanHead Stainless*
- 4 **Part # 03-2064**  
*Plunger Latch Compression Spring - Stainless Steel*
- 5 **Part # 03-2063**  
*Plunger Latch Pin Stainless 5 3/4"*
- 6 **Part # 03-2706**  
*Sliding Door Striker Plate Stainless 4 1/2" Post*



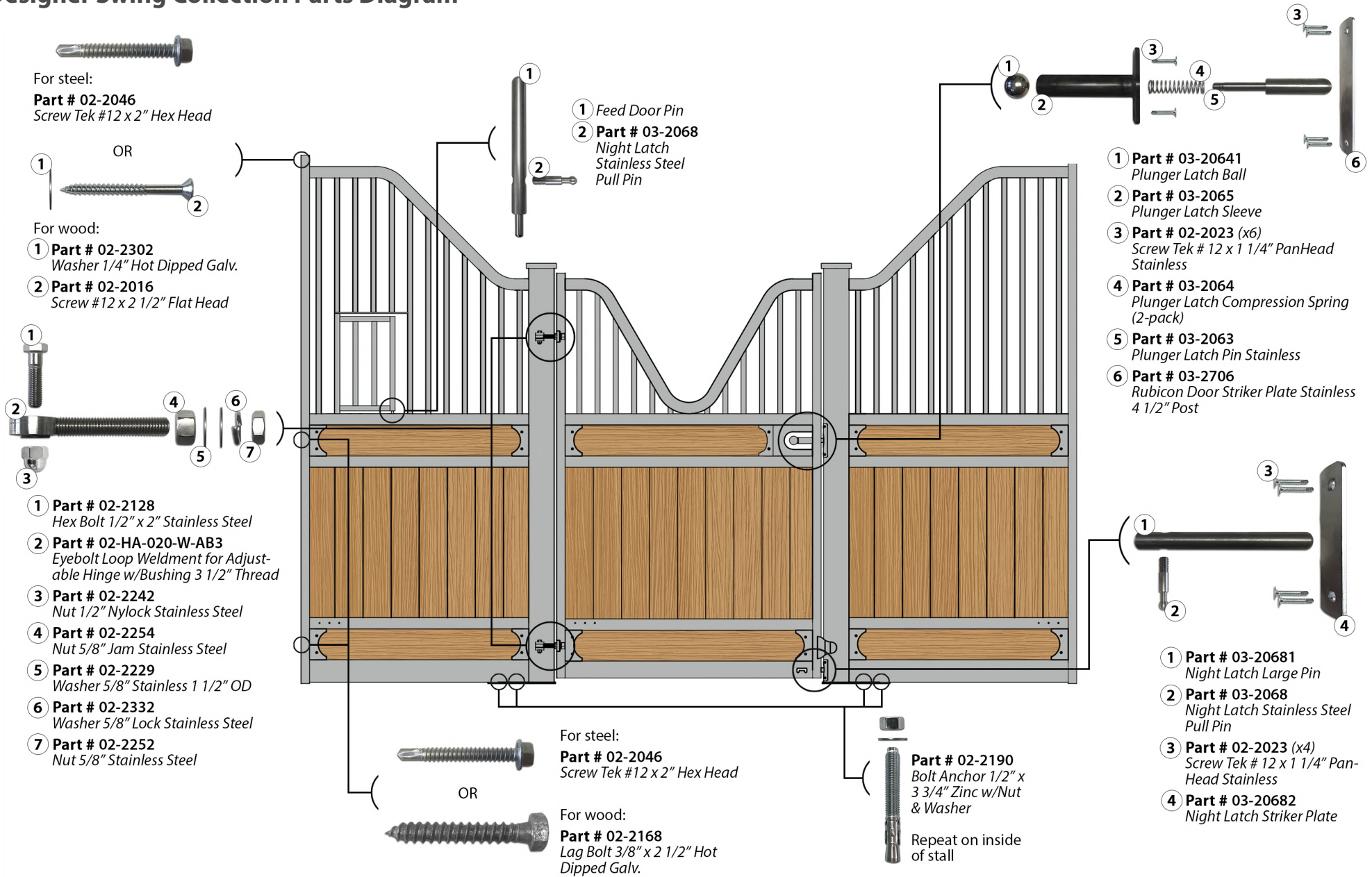
## Concrete Anchor Instructions

Part # 02-2190 Bolt Anchor 1/2" x 3 3/4" Zinc w/Nut & Washer

1. Assemble all of the fronts in the correct spots. The last process will be to drill down through the plate to a depth of 4" with a 1/2" drill bit using a hammer drill.
2. Drive the anchors all the way down with the washer and nut all the way to the end of the tread. Once the anchor is driven down, tighten with an impact until snug.

# DESIGNER SWING COLLECTION INSTALLATION INSTRUCTIONS

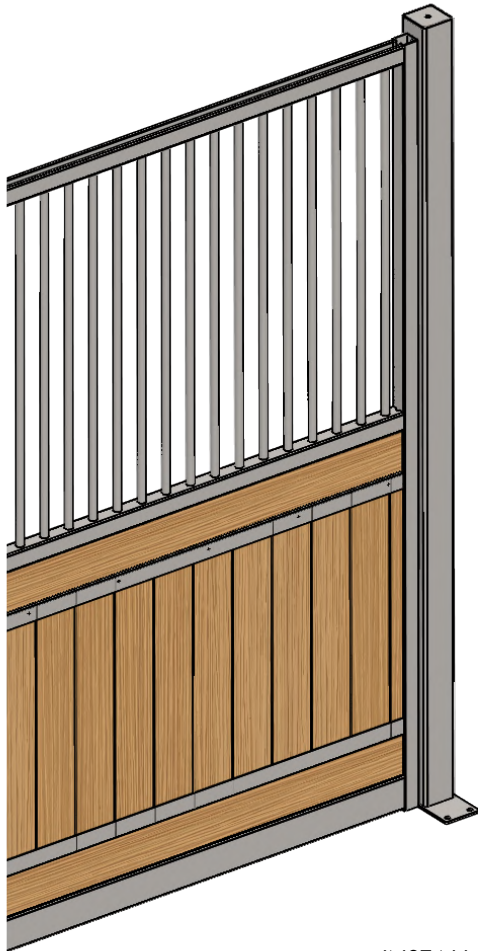
## Designer Swing Collection Parts Diagram





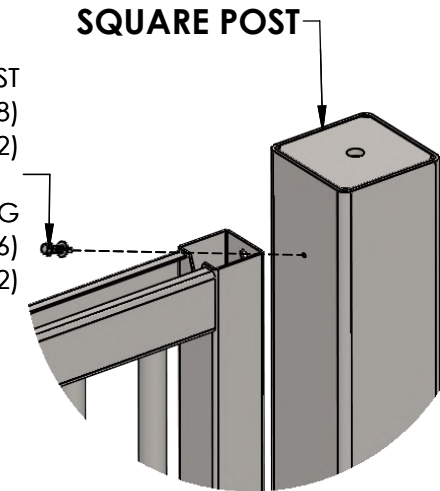
# DESIGNER SWING COLLECTION INSTALLATION INSTRUCTIONS

## Standard Partition Installation Instructions



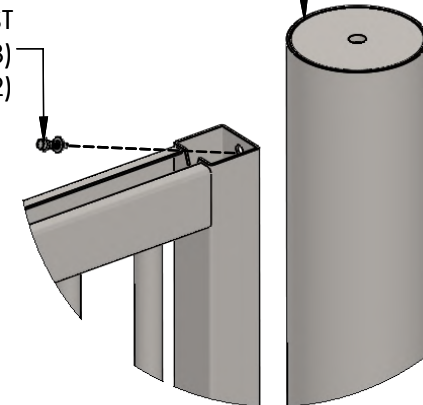
INSTALL PARTITION TO METAL POST  
USING #12 TEK SCREW (P/N 02-2008)  
AND WASHER (P/N 02-2302)

TO WOODEN POST USING  
WOOD SCREWS (P/N 02-2016)  
AND WASHER (P/N 02-2302)



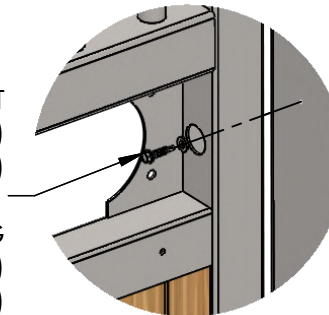
INSTALL PARTITION TO METAL POST  
USING #12 TEK SCREW (P/N 02-2008)  
AND WASHER (P/N 02-2302)

**ROUND POST**



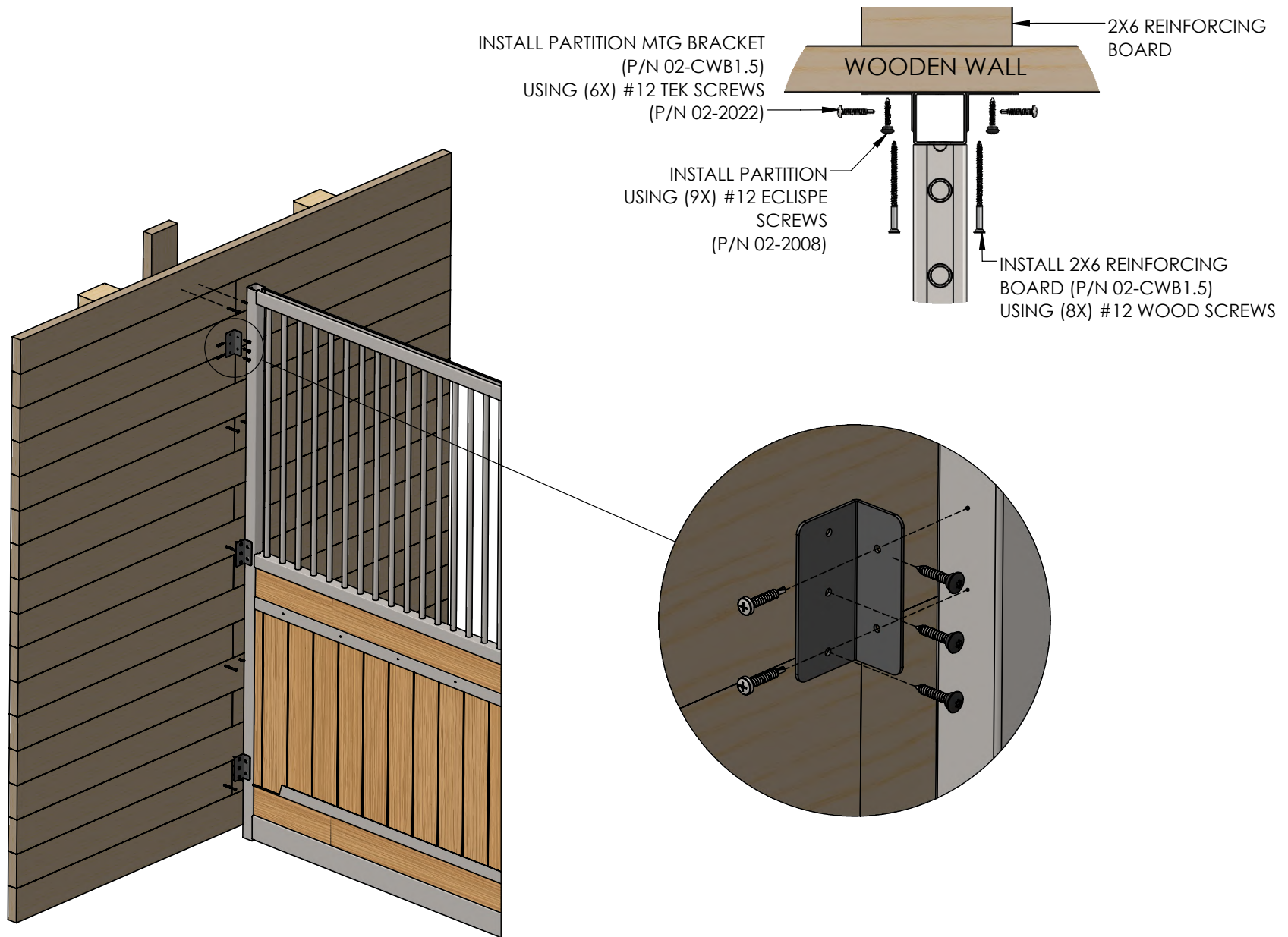
INSTALL PARTITION TO METAL POST  
USING #12 TEK SCREW (P/N 02-2008)  
AND WASHER (P/N 02-2302)

TO WOODEN POST USING  
WOOD SCREWS (P/N 02-2016)  
AND WASHER (P/N 02-2302)



# DESIGNER SWING COLLECTION INSTALLATION INSTRUCTIONS

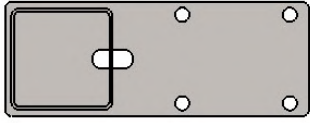
## Optional Partition Installation Instructions



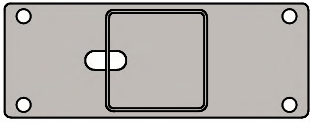
# DESIGNER SWING COLLECTION INSTALLATION INSTRUCTIONS

## Square Post Identification

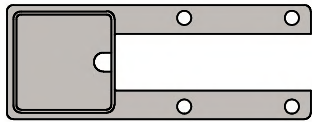
**END POST**



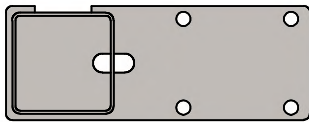
**SHARED POST**



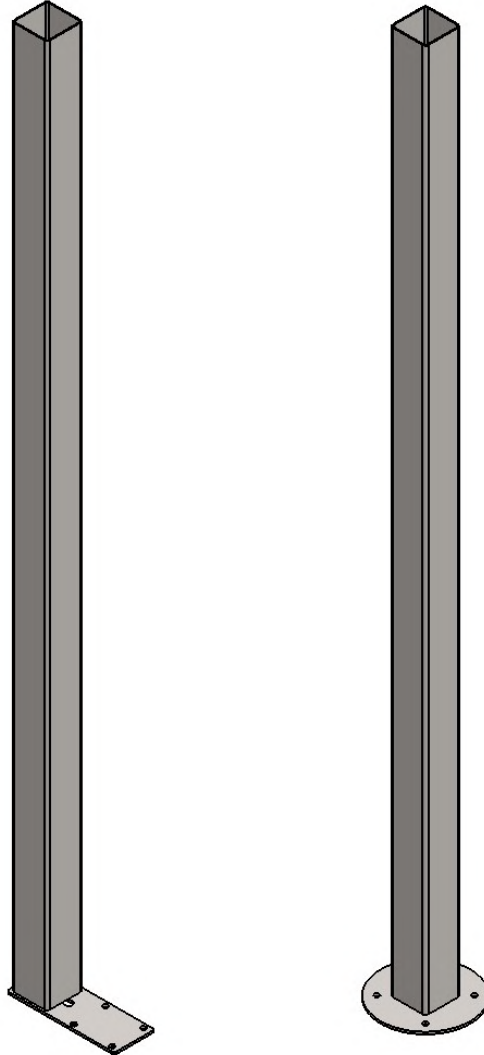
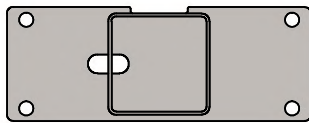
**PARTITION POST**



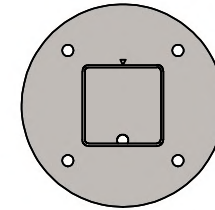
**PARTITION END POST**



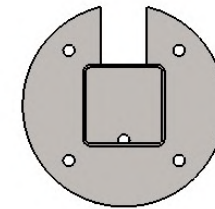
**PARTITION SHARED POST**



**LOOSE POST**



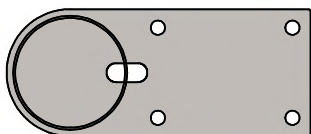
**LOOSE PARTITION POST**



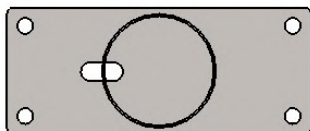
# DESIGNER SWING COLLECTION INSTALLATION INSTRUCTIONS

## Round Post Identification

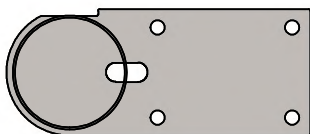
**END POST**



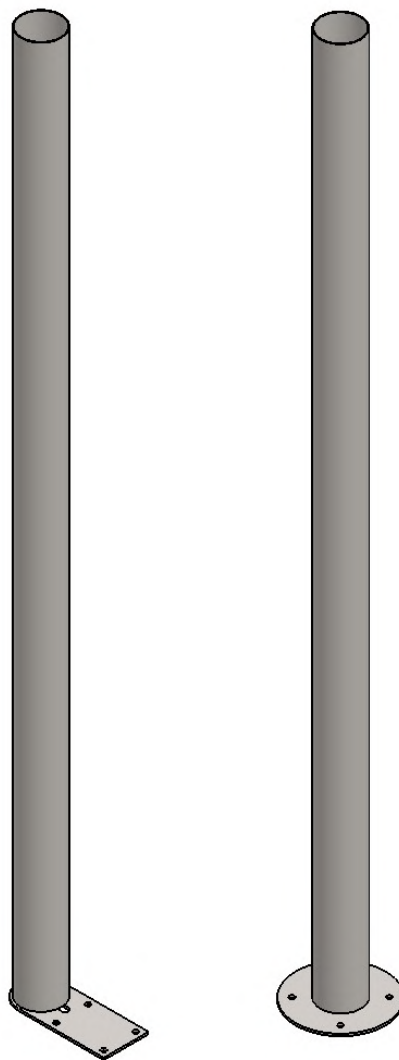
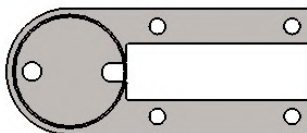
**SHARED POST**



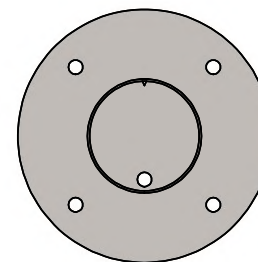
**PARTITION END POST**



**PARTITION POST**



**LOOSE POST**



**LOOSE PARTITION POST**

