

Nelson Waterer Info Guide



Nelson Waterer Info Guide

Models & Specifications for 700 Series Automatic Horse Waterers

Wall Mounted 700 Series

Free Standing 700 Series



Model	730-10C	730-10W	760-10C	760-10W	730-10	730-24	760-10	760-24
Housing Material*	Aluminum Stainless	Aluminum Stainless	Aluminum Stainless	Aluminum Stainless	Aluminum Stainless	Aluminum Stainless	Aluminum Stainless	Aluminum Stainless
Width	13"	13"	16"	16"	13"	13"	16"	16"
Height	11"	11"	11"	11"	11"	25"	11"	25"
Optional Heater Kit**	250 Watt	250 Watt	325 Watt	325 Watt	250 Watt	250 Watt	325 Watt	325 Watt
Capacity	10-12 Horses	10-12 Horses	15-18 Horses	15-18 Horses	10-12 Horses	10-12 Horses	15-18 Horses	15-18 Horses

***Housing Material:** Your choice of high strength, 0.105" thick 304 stainless steel or aircraft grade, 0.125" thick 6061 aluminum.

****Optional Heater Kit:** Fully insulated heater. Mounts on ceramic insulators and does not touch metal or water. 120 VAC, 2-wire with ground connection. Thermostat and water housing insulation included.



Nelson Waterer Info Guide

Mounting Options

Wall Mounted 700 Series



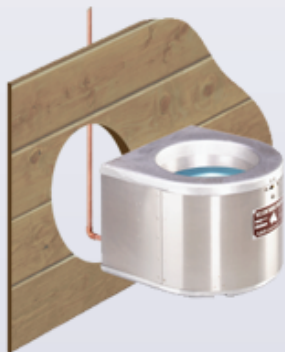
730-10W & 760-10W

Utility holes in back allow two units mounted in adjacent stalls to share one waterline, reducing cost.



730-10C & 760-10C

Mount in stall corner for maximum protection and efficient use of stall space.



730-10W & 760-10W

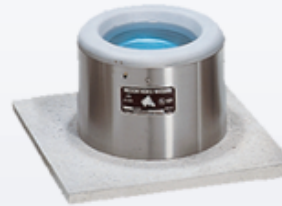
Mount on outside wall and bring waterline from heated room through wall and into back of waterer. Installation allows for waterline to be protected from freezing.

Free Standing 700 Series



730-10 & 760-10

Shorter round models are designed to install in standard-sized 12 and 15 inch concrete sewer pipe for an indestructible installation.



730-10 & 760-10

Ten inch tall models mount on concrete pads for shorter animals. Model 760 has a bigger drinking bowl, allowing it to hold more water and can accommodate more horses.

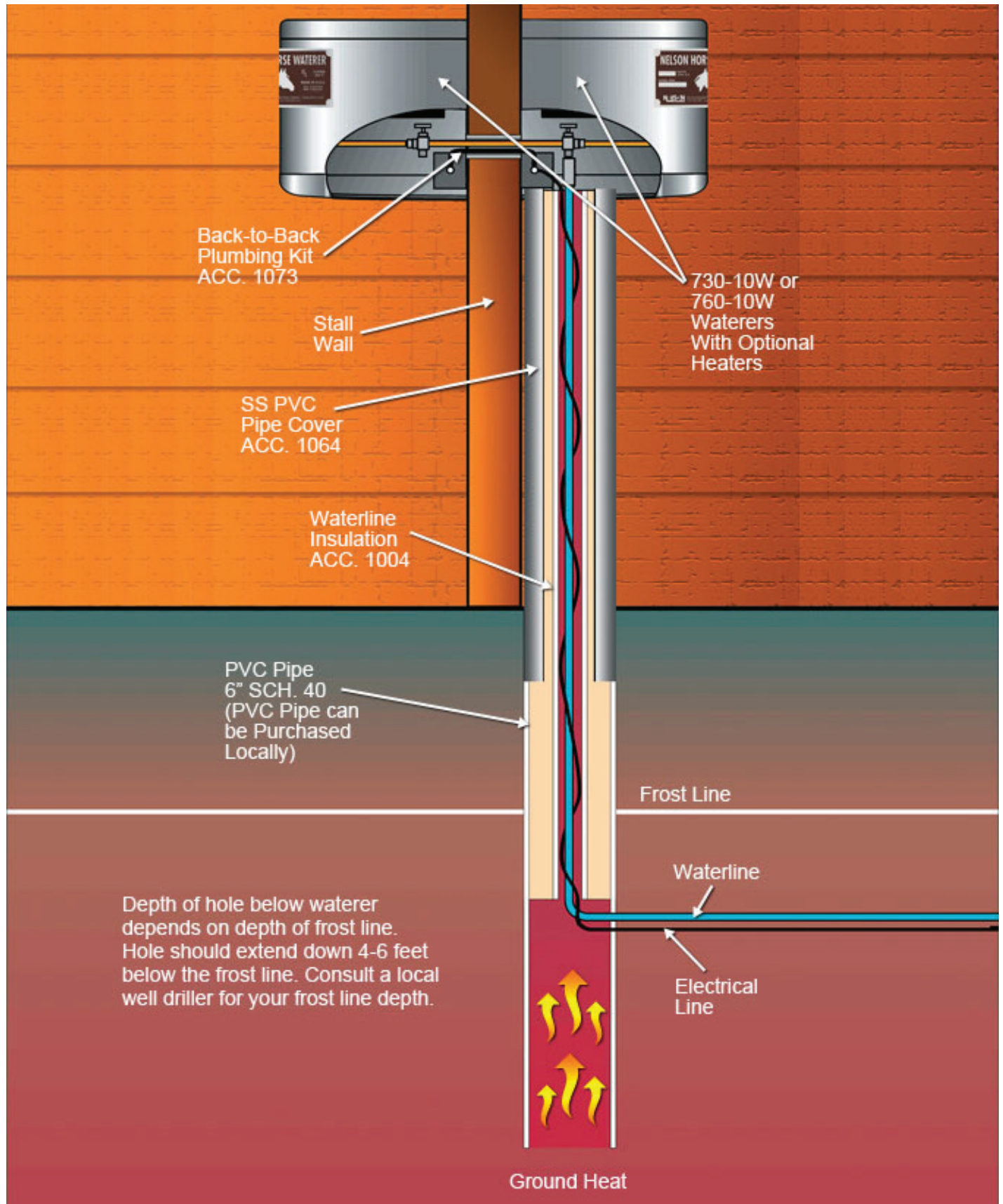


730-24 & 760-24

Large 16" bowl serves more horses and is well suited for fence line installations and stall partitions.

Nelson Waterer Info Guide

Freezing Climate Installation for Stalls



Nelson Waterer Info Guide

700 Series Features

SERIES 700 WATERERS

Automatic waterers for stall or pasture
designed and built to last a lifetime

The entire waterer
is manufactured
from materials that
won't rust.

Heavy duty cast
aluminum drinking
bowl cover. Locks
securely and is easily
removable.

Removable stainless steel
drinking bowl is easily
cleaned or sterilized.

Convenient waterline
shut-off lever

Electrical
junction box

Brass shut-off valve

Patented balance
beam water valve
actuating system

Optional electric heater.
Thermostat actuated.

Flexible 18" long waterline
connecting hose with fittings

Balance beam
counterweight

Optional water line
insulation ACC. 1004

Four mounting
lugs securely
fasten waterer to
concrete pad

Housing insulation
standard when buying
units with heater

11" Housing Height
25" Housing Height



No rust stainless
steel or +aluminum
housing

Concrete pad

Drain tile
(Obtain locally)